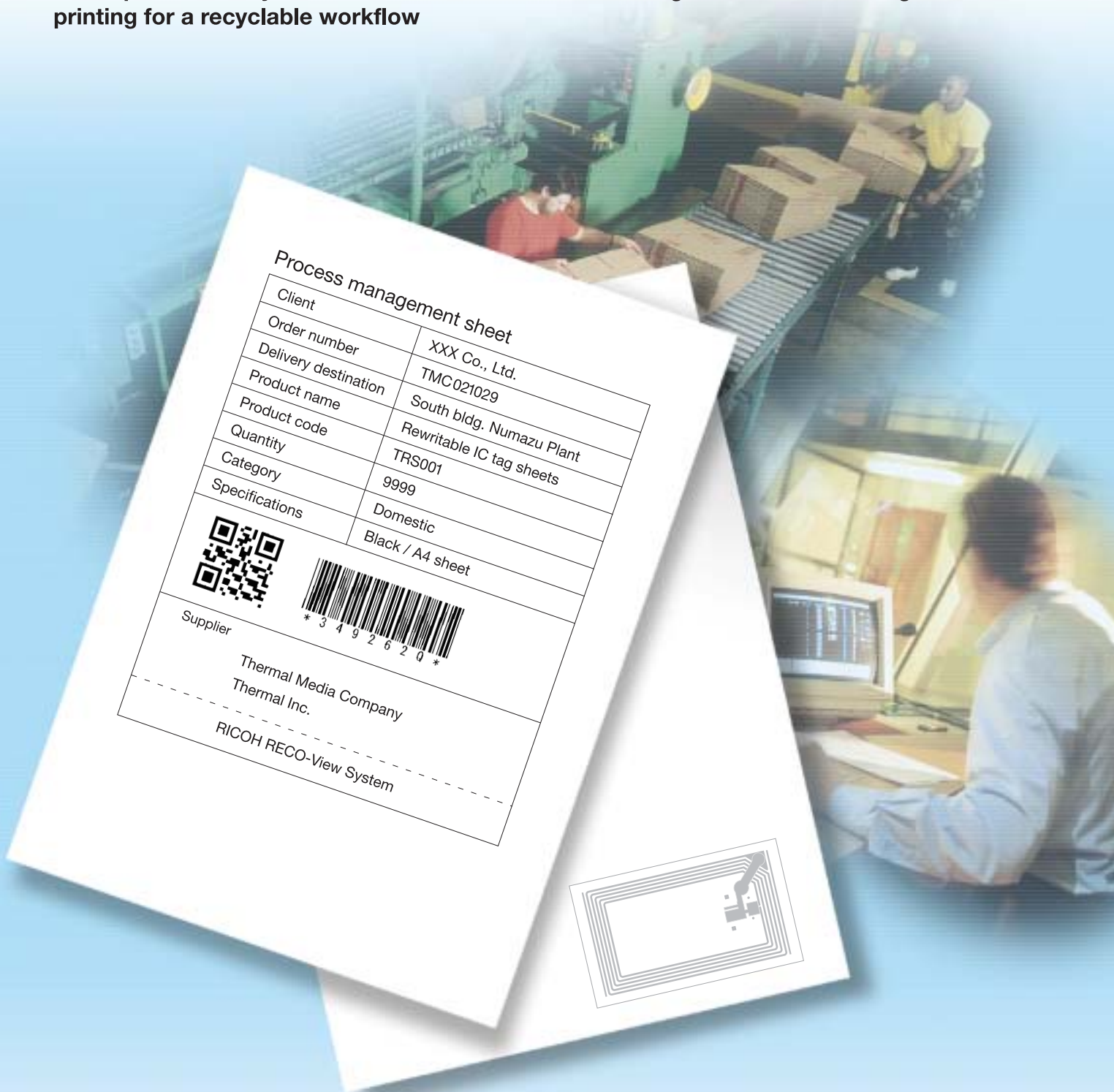


# RICOH RECO-View™ Sheet/IC Tag System

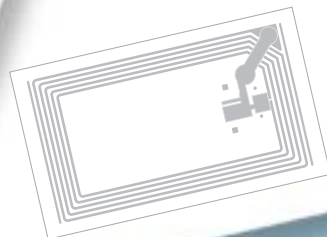
A comprehensive system for visual information and IC digital data — achieving rewritable printing for a recyclable workflow



## Process management sheet

Client	XXX Co., Ltd.
Order number	TMC021029
Delivery destination	South bldg. Numazu Plant
Product name	Rewritable IC tag sheets
Product code	TRS001
Quantity	9999
Category	Domestic
Specifications	Black / A4 sheet
Supplier	Thermal Media Company Thermal Inc.

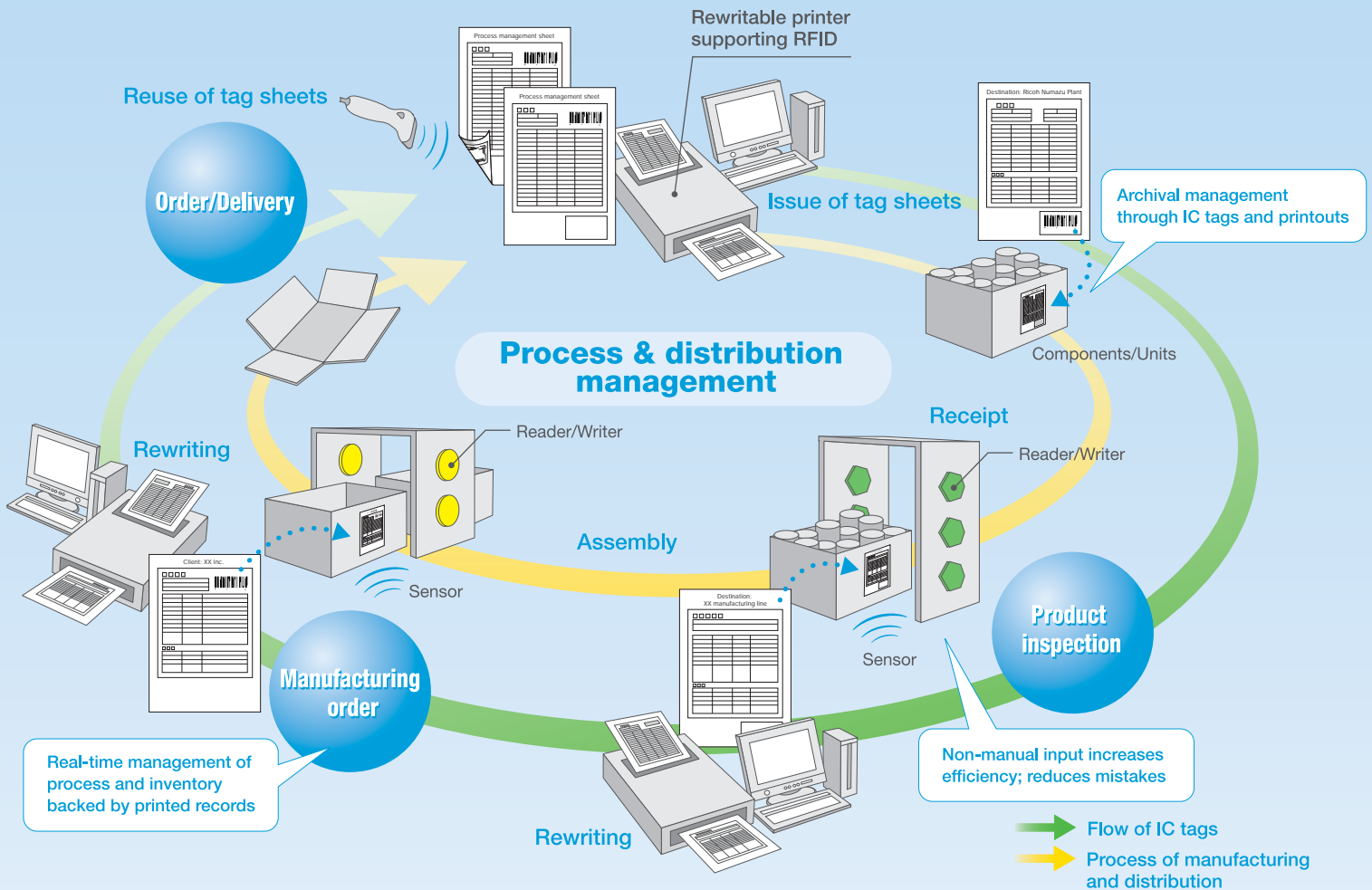
---  
RICOH RECO-View System



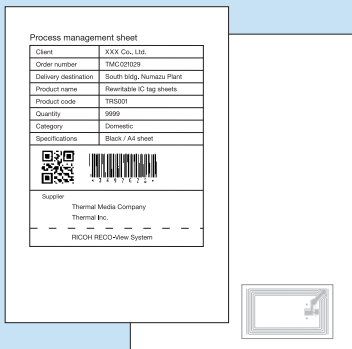
- ◆ Reduces running costs through repeated IC tag use
- ◆ Cuts down on waste paper for environmentally friendly performance
- ◆ Supports sheet sizes up to A4 and a range of data indications
- ◆ Crisp black ink printing allows easy reading
- ◆ Makes processes compatible with the barcode system

# Adds efficiency to the management of manufacturing, inventory, and distribution to cut costs for plants and warehouses

Combining RFID capabilities for the real-time management of inventory and manufacturing processes with the convenience of rewritable systems, Ricoh transforms tags into reusable management sheets — offering your organization the advantage of digital information visualization while achieving a significant cut in costs.



## RICOH RECO-View Sheet 530BF series



Example of a RICOH RECO-View IC tag sheet.

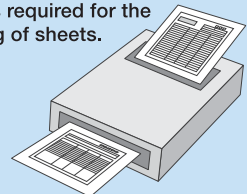
### RICOH RECO-View Sheet Specifications

<b>Material</b>	125µm white PET film (total thickness up to approx. 140µm)
<b>Color</b>	Black
<b>Color density</b>	Over 1.1 (supporting barcode recognition)
<b>Capacity for reuse</b>	More than 100 times (depending on usage conditions)
<b>Sheet sizes</b>	A4, A5, and others

### RICOH RECO-View IC Tag Sheet Specifications

<b>Material</b>	125µm white PET film (total thickness up to approx. 140µm)
<b>Color</b>	Black
<b>Color density</b>	Over 1.1 (supporting barcode recognition)
<b>Capacity for reuse</b>	More than 100 times (depending on usage conditions)
<b>Sheet sizes</b>	A4, A5, and others
<b>Supported IC standard</b>	ISO18000-3 MODE1
<b>Areas supporting printing/erasing</b>	All areas except IC tag

A rewritable printer supporting RFID is required for the printing of sheets.



Suggested specifications of printer (may vary)

Item	Suggested specifications
Resolution	300dpi
Print/Erase speed	30-50mm/sec
Supported media size	Up to A4
Media stack capacity	20-200 sheets
Supported IC standard	ISO18000-3 MODE1

# RICOH

RICOH COMPANY, LTD.

Thermal Rewritable Sales & Marketing Department  
Thermal Media Company  
3-2-3 Shin-yokohama, Kohoku-ku  
Yokohama-shi 222-8530, Japan  
Phone: +81-45-477-1620 Fax: +81-45-477-2743

RICOH ELECTRONICS, INC.

One Ricoh Plaza, 2320 Redhill Avenue  
Santa Ana, CA92705, U.S.A.  
Phone: 949-263-2188 Fax: 949-263-2150

RICOH INDUSTRIE FRANCE S.A.

144, route de Rouffach, F-68920 WETTOLSHEIM  
COLMAR, France  
Phone: +33 (0)3 89 20 41 90 Fax: +33 (0)3 89 20 41 43



Ricoh believes in conserving the earth's precious natural resources. This brochure is printed on recycled paper.

For further information please contact: